

FIREBALL

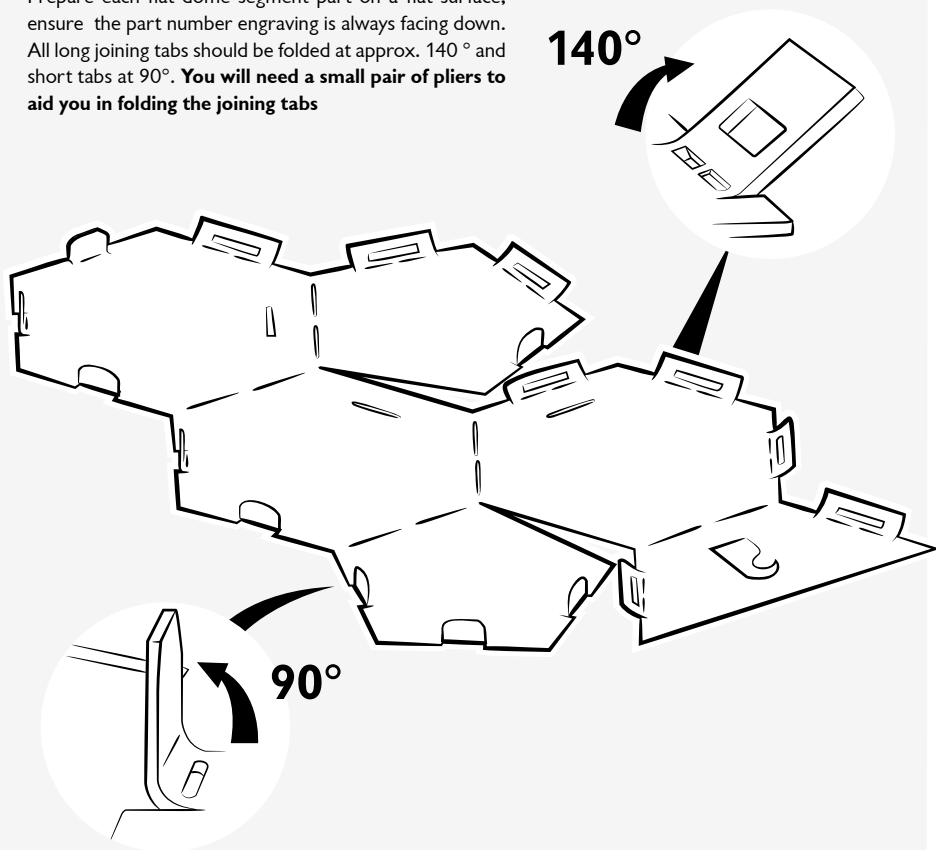
CHARNWOOD FIREBALL

The Charnwood Fire Ball is a self-assembly outdoor fire pit kit British made on the Isle of Wight. A modern, sculptural piece for the garden with a rustic finish.

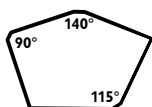
This iconic piece is cut from mild steel and supplied as a flat pack kit making the perfect present for someone who enjoys a small project. The satisfaction of building this product is all part of the experience. All that is required is an hour of your time, sturdy gloves, a pair of pliers and a hammer.

PREPARATION

Prepare each flat dome segment part on a flat surface, ensure the part number engraving is always facing down. All long joining tabs should be folded at approx. 140° and short tabs at 90° . **You will need a small pair of pliers to aid you in folding the joining tabs**



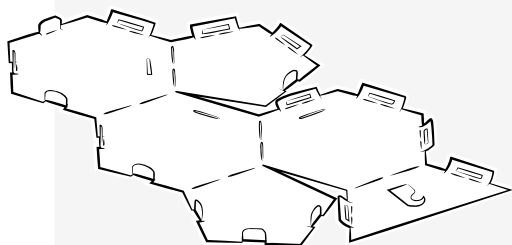
TH165 is a tool that can be used to check the precision of the angles of the folded tabs if required.



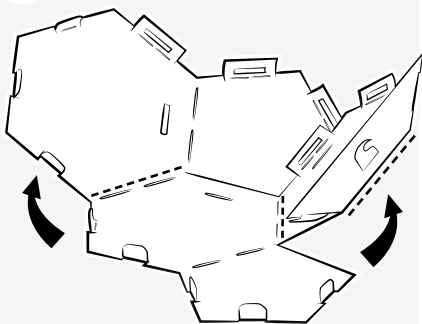
The ball is made up of 6 segments marked as:

TH160/01 qty x 1
TH160/02 qty x 1
TH160/03 qty x 2
TH160/04 qty x 1
TH160/05 qty x 1

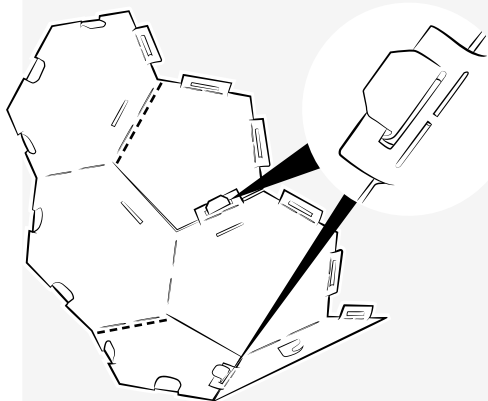
- 1** Lay the prepared segment on a flat surface



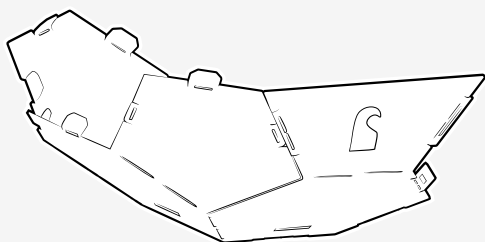
- 2** 3 folds as illustrated by dashed lines



- 3** 2 folds as illustrated by dashed lines. Bend the tabs fully over and lock into position. Use a small hammer to flatten the tabs into place.



- 4** Completed segment. Repeat steps 1-3 for all remaining dome pieces.

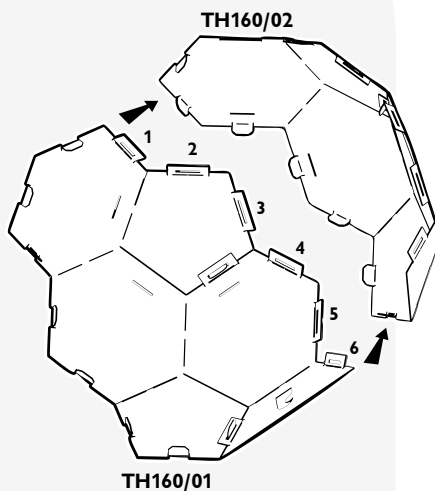
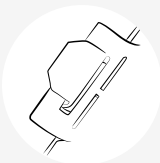


BALL ASSEMBLY

5

Take part TH160/01 and TH160/02 and attach them together using the six tabs as shown in the illustration. It is best to align the first tab and then work down. This will form the base of the ball.

To secure the tabs, bend the tabs fully over and lock into position. Use a small hammer to flatten the tabs into place.

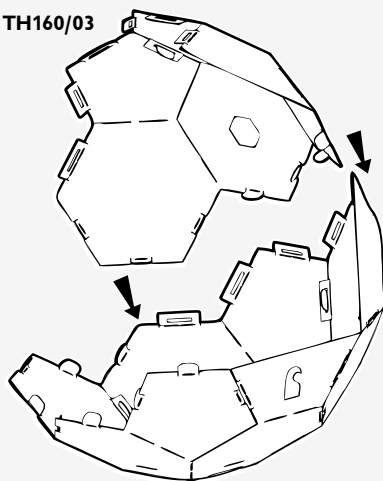


6

Note the orientation of the logo on the front of the base.

Connect TH160/03 in the same way as illustrated and secure the six tabs.

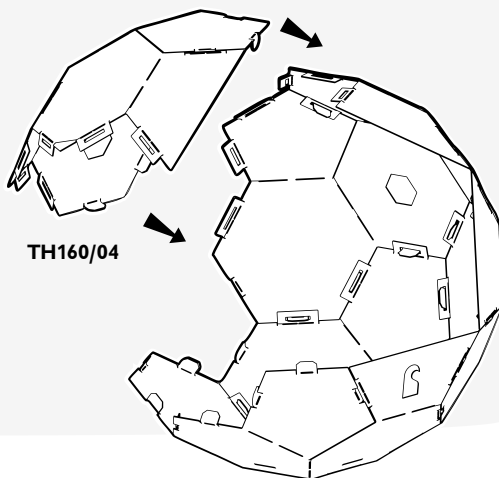
TH160/03



7

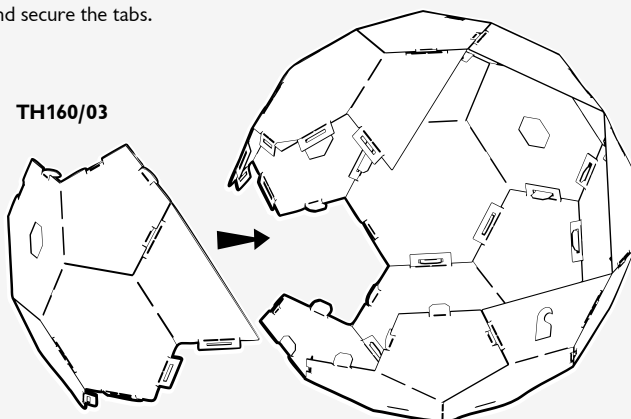
Connect TH160/04 in the same way as illustrated and secure the six tabs.

TH160/04



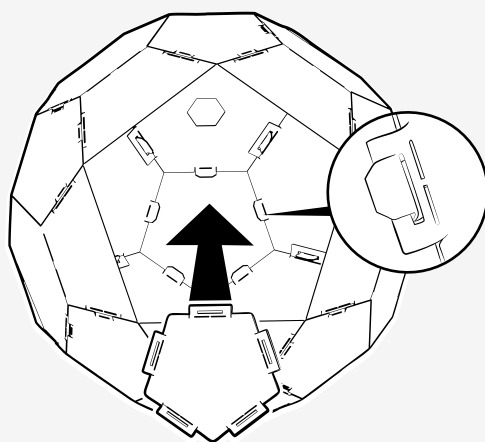
8

Connect TH160/03 in the same way as illustrated and secure the tabs.



9

To complete the ball, take part TH160/05 and assemble in position shown inside the dome. Some adjustment of the tabs may be necessary to fit this part. Secure the tabs once in position.

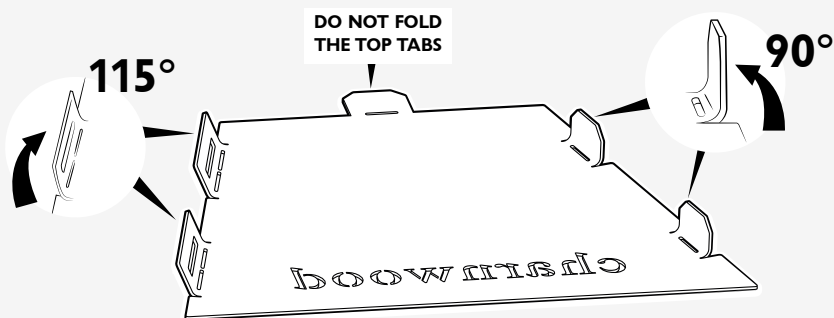


TH160/05

BASE ASSEMBLY

10

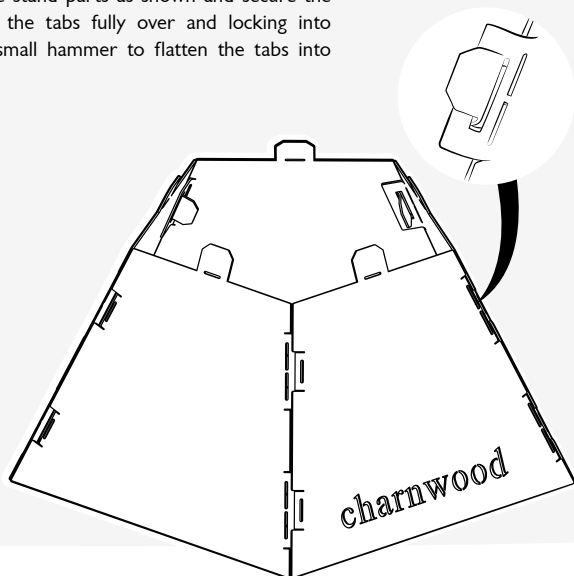
Prepare the five base parts on a flat surface, ensure the part number engraving is always facing down. All long side joining tabs should be folded at approx 115° and side short tabs at 90° . **You will need a small pair of pliers to aid you in folding the joining tabs**



Note orientation of Charnwood logo text on front piece

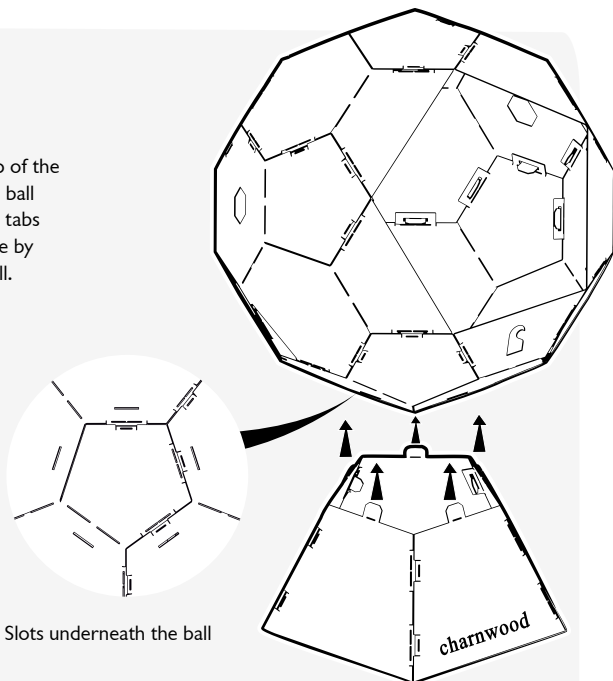
11

Assemble the five stand parts as shown and secure the tabs by bending the tabs fully over and locking into position. Use a small hammer to flatten the tabs into place.



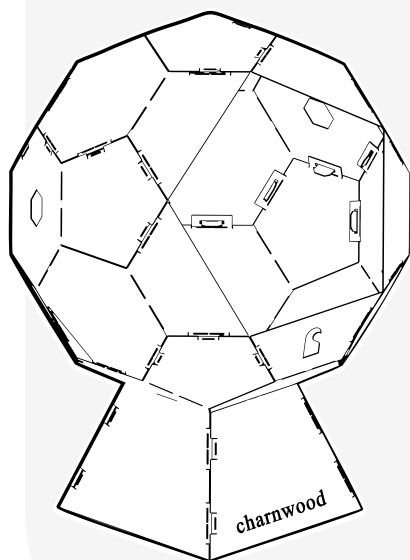
12

Line up the five upright tabs on the top of the base with the five slots underneath the ball and assemble. Some adjustment to the tabs may be necessary. Once aligned, secure by folding the tabs fully over inside the ball.



13

Completed fire ball assembly. The wood / ash level should not reach higher than the three air holes.



USE AND SAFETY

The Fireball will get hot in use and is intended for outside use only.

It must be placed on a non-combustible surface and away from combustible objects.

This product is only designed to burn wood and the ash level should not reach higher than the three air holes.

The Fireball is cut from mild steel and is 100% recyclable.

Due to the nature of steel the Fireball will oxidise over time and the look of the product will change. This is all part of the design and character of the product.

Please burn responsibly

ENJOY YOUR

#charnwoodfireball

charnwood BISHOPS WAY, NEWPORT, ISLE OF WIGHT PO30 5WS, UNITED KINGDOM
TEL. +44 (0) 1983 537777 • FAX. +44 (0) 1983 537788 • WWW.CHARNWOOD.COM



A Division of A.J. Wells & Sons Limited Registered in England No. 03809371