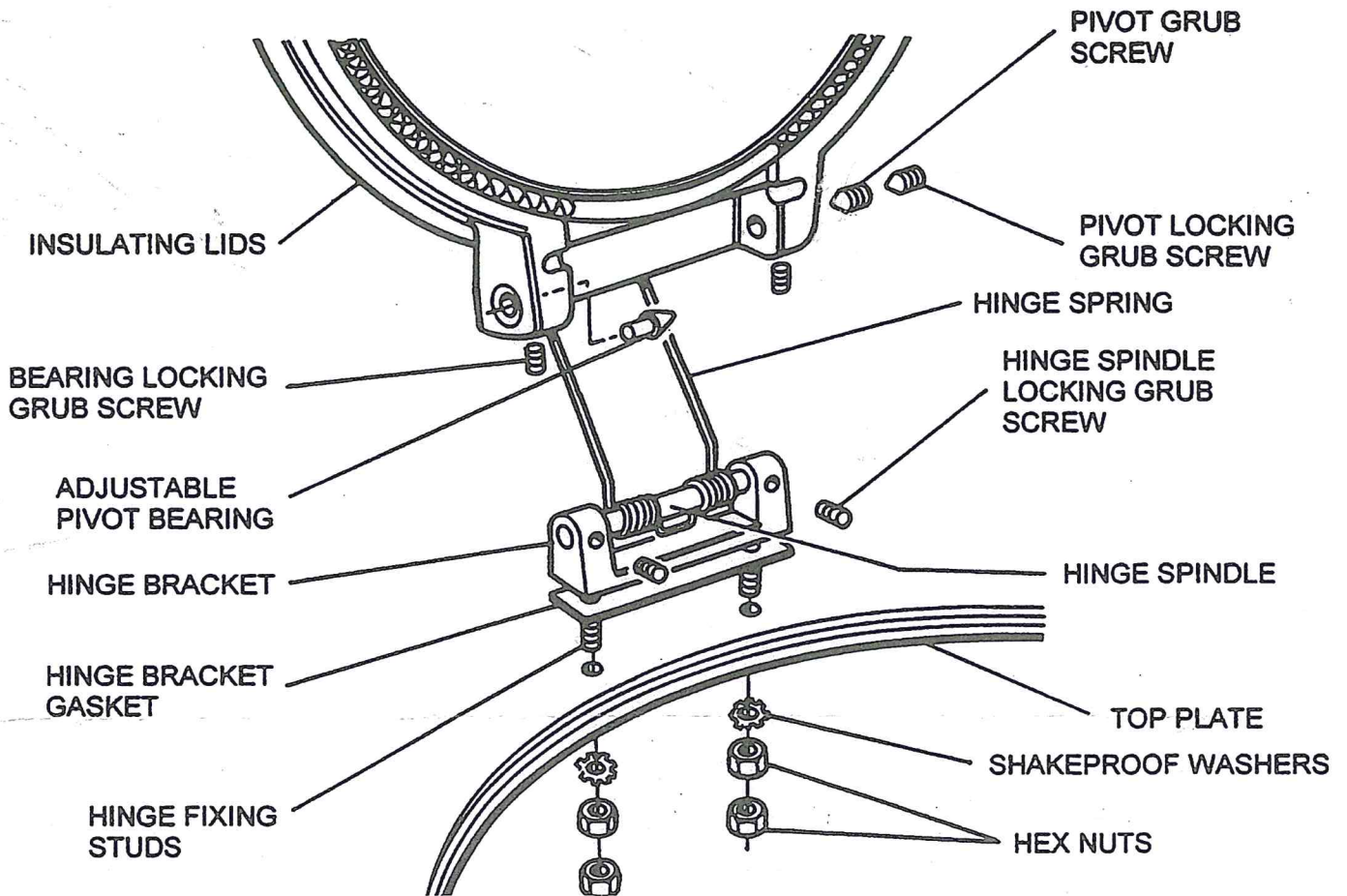




## REPLACEMENT OF INSULATING LID HINGE ASSEMBLY (8mm Dia Hinge {Pin})



DESN 511550

THE COOKER SHOULD BE TURNED OFF THE NIGHT BEFORE THE DAY OF THE REPLACEMENT OF THE INSULATING LID HINGE ASSEMBLY.

- Remove insulating rings, simmering spot and hot spot from the appliance.
- Unscrew hex. nuts and shakeproof washers from the underside of the top plate to release the hinge bracket and lift off the complete insulating lid assembly from the top plate. Place the lid on a clean, soft abrasive free fabric to prevent scratches.
- Loosen off bearing locking grub screw from the rear face of the RH hinge lug and remove pivot locking grub screw.
- Unscrew pivot grub screw sufficiently to disengage from hinge spindle and remove hinge bracket assembly.  
**NOTE:** In the event of replace the hinge spring only, unscrew hinge spindle locking grub screw and remove hinge spindle and spring. Fit new spring to hinge bracket in reverse order of removal.
- Position new hinge assembly on the lid and fix by screwing in pivot grub screw **ensuring that adjustable pivot bearing and pivot grub screw are firmly located on the hinge spindle recesses.**
- Screw in pivot locking grub screw tightly and screw in bearing locking grub screw on the rear face of hinge lug.
- Refit insulating lid to the top plate in the reverse order of dismantling.
- Refit hot spot, simmering spot and insulating rings to the appliance. Inspect the lid is sitting evenly in the closed position. The level of the lid can be adjusted if required by loosening off the bearing locking grub screw from the rear face of the LH hinge lug and turning the adjustable pivot bearing with a screw driver. When the desired level of the lid is achieved, lock the adjustable pivot bearing with locking grub screw from the rear face of hinge lug.